

FREQUENTLY ASKED QUESTIONS

WHO SHOULD BE TESTED FOR DIABETIC EYE DISEASE?

- Any adult with diabetes
- Children with diabetes who are 10 years and older

WHAT COULD BE FOUND FROM AN EYE PHOTO TEST?

Screening can detect:

- Early signs of diabetic eye disease
- Other medical eye conditions

HOW CAN I LOWER MY RISK OF DEVELOPING DIABETIC EYE DISEASE?

- Get your diabetic eye check once a year
- Take your medication as prescribed
- Control your blood glucose as effectively as possible
- Have your blood pressure checked regularly

REMEMBER: Eye screenings are just a part of managing your diabetes. If found, diabetic eye disease is treatable, especially when it is caught early.

DIABETIC EYE SCREENINGS ARE AVAILABLE AT:

Delton Family Medical Center	608-254-5888
Elroy Family Medical Center	608-462-8466
Necedah Family Medical Center	608-565-2000
New Lisbon Family Medical Center	608-562-3111
UW Health Speciality Clinic - Mauston	608-847-7355

Your guide to

DIABETIC EYE CHECKS



A window into your health

Provided by your health partners



UWHealth

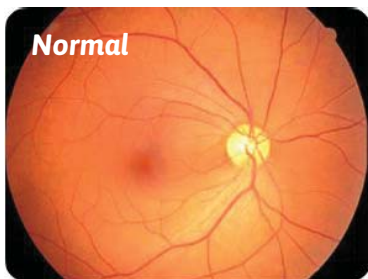
WHY SHOULD I BE CHECKED?

A diabetic eye check is a key part of your diabetes care. Everyone with diabetes is at risk of developing eye disease. Screenings can detect damage to the eye before you notice any changes to your vision. This early detection helps to prevent vision loss.

Yearly diabetic eye checks are recommended by the American Diabetes Association. The tests can be performed by your regular eye doctor, or can be done by receiving an eye photo test at any of Mile Bluff's clinic locations.

WHAT IS DIABETIC EYE DISEASE?

This condition occurs when diabetes affects small blood vessels, damaging the part of the eye called the retina. It can cause the blood vessels in the retina to leak and bleed. If it is not treated early, then it can lead to serious vision loss.



HOW MUCH DOES IT COST?

A diabetic eye photo is often more affordable than a dilated eye exam with an eye doctor.

Most insurance plans do cover the eye photo test. If an insurance carrier does not, patients will need to pay \$30 prior to the test.

HOW DO I MAKE AN APPOINTMENT?

You will need an eye photo order from your primary care provider to receive this test. If you are already at the clinic for an appointment, you can often get tested as a walk-in patient that same day. You are also welcome to call any Mile Bluff clinic location to make an appointment.

WHAT HAPPENS DURING MY EYE PHOTO TEST?

- You will sit in a chair, place your chin on a chin rest, and look at a green light.
- You will see a quick flash of light, similar to the flash from a camera.
- Pictures of both eyes will be taken, which usually takes just a few minutes.



HOW WILL I FEEL AFTER THE TEST?

- Patients describe the test as easy, quick and painless.
- Because the eyes are not usually dilated for the test, most people are comfortable reading and driving afterwards.

HOW DO I GET RESULTS FROM MY EYE PHOTO TEST?

Your eye photos will be reviewed by eye doctors at the University of Wisconsin - Madison. They will send your results to your primary care provider. We will mail your results to you.

If you have an abnormal test result, you will receive a list of eye doctors in the community who can help you. There are many treatment options available for diabetic eye disease, including laser treatments and medication to protect your vision.

